



DECEMBER
2025

THE PALETTE

YOUR CAS COMMITTEE

- CHAIR: JO-ANNE PENTZ
- SECRETARY & PALETTE: PHILIPPA VERSFELD
- TREASURER: AVRIL SHORKEND
- SOCIAL MEDIA & EXHIBITIONS: SAMANTHA HARLOCK-MOISEY
- CATERING: SANDY DUFFELL-CANHAM
- COMPETITIONS: RAKSHA GAJJAR
- COMMITTEE ASSISTANT - WEBSITE: NADJA MARTINUSSEN
- COMMITTEE ASSISTANT - EXHIBITIONS & FINANCE: JUDE MOLLOY
- COMMITTEE ASSISTANT - LIBRARY: MIEKE DEVILL

Good day, Members,

Heartfelt congratulations to all who made sales during our Spring exhibitions. If your work didn't sell this time, know that you're in excellent company - many renowned artists faced setbacks before finding success. Remember, every exhibition is a step forward in your creative journey. As Marc Chagall once said, "Art must be an expression of love or it is nothing." Buyers are drawn to artwork for countless reasons: palette, price, emotional resonance, size, or subject. This year, we surpassed previous milestones, achieving record daily and total sales—find more details on page 6.

We're delighted to announce that Sonja Rivett-Carnac has received our Founders' Trophy for 2025, with Lynda Murison in second place and Lynne Menge in third. Thank you for your commitment and for sharing your creative spirit with our community. We're also deeply grateful to our sponsors - The Italian Art Shop, The Deckle Edge, Brush and Canvas, Cape Art and Frame, The Write Shoppe, and Artist's Friend. This festive season, remember them when friends and family ask about gifts for your artistic pursuits.

What a remarkable year it has been for our community! We successfully hosted three exhibitions, published our first calendar featuring members' artworks, and enjoyed eleven enriching opportunities to develop our artistic skills through monthly meetings.

Looking ahead, our first event of the new year will be the exhibition at Kirstenbosch Gardens, running from 23 January to 3 February 2026. Keep an eye on your inbox in the New Year for further details about this exciting opportunity.

Please stay safe and take care this festive season. Whether you're celebrating Christmas, Kwanzaa, Hanukkah, or simply enjoying time with loved ones, may you be blessed with creativity, joy, and the warmth of our wonderful community. Every member's contribution makes our society special - thank you for being part of it.

Happy Creating!

To Anne
CAS Chair

Website: www.constantiabergartsociety.com

Email: constantiabergartsociety@gmail.com

Instagram: [@casconstantiabergartsociety](https://www.instagram.com/casconstantiabergartsociety)

Facebook: <https://www.facebook.com/CASConstantiabergArtSociety>

CAS Diary

MEETING DATES

25th November: Founders' Trophy Competition

December : No Meeting

27 January : William Onker

24 February : Boniface Chikwenhere

Meetings are held on the last Tuesday evening of every month,
at the Alphen Hall in Constantia.

Time: 7pm for 7.30pm.

KIRSTENBOSCH EXHIBITIONS

23 January - 3 February 2026

NOTICES

BECOME A CAS MEMBER

2025/26 Subscriptions:

* New and lapsed Members: Joining fee of R175 plus the annual subscription.

* Single member subscription: R370 (Subs include monthly emailed newsletter)

* 2nd-member family household subscription: + R185

* Additional family household member/s + R95

SEND your **POP** to

constantibergartsociety@gmail.com

2025/26 Membership Expires 31 July 2026

WEBSITE GALLERY

We are aiming to keep our Artists' Gallery more up to date with current work. This way, we can create a further space to put your work on view for buyers and collectors. Please check the website regularly and send updates to constantibergartsociety@gmail.com



IS MY WORK CURRENT AND AVAILABLE FOR PURCHASE?



IS THE TITLE AND MEDIUM INFORMATION INCLUDED?



IS MY NAME AND EMAIL CONTACT CORRECT?



[CLICK HERE TO CHECK RIGHT NOW!](#)

Create - Exhibit - Support - Inspire

MONTHLY CHALLENGE

JANUARY + FEBRUARY

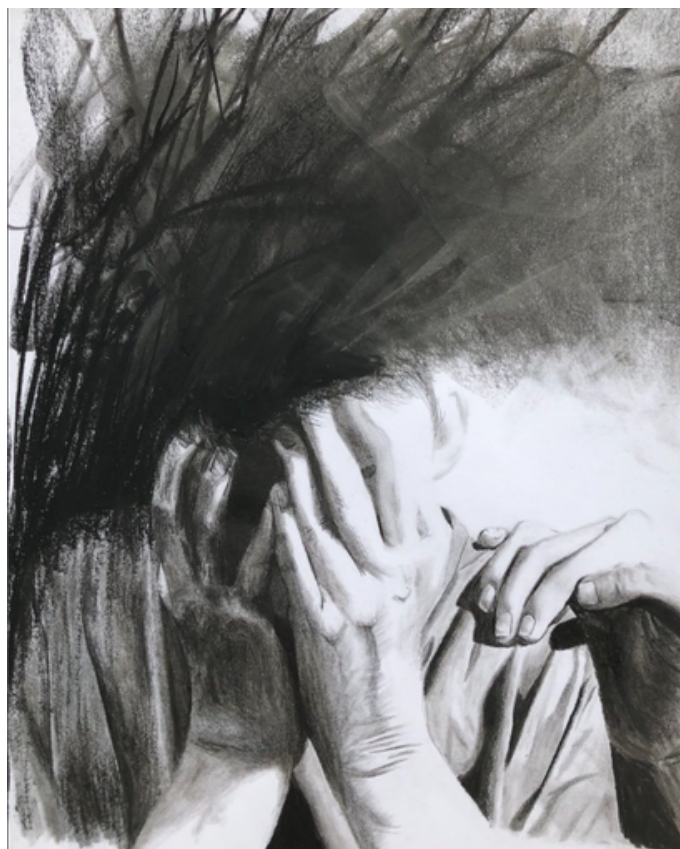
January : Print

Using any printmaking method you're familiar with—such as lino cuts, stencils, stamps, gel plates, or any other print technique—create an artwork that captures your personal feeling or interpretation of the new year. Think about mood, colour, symbolism, or imagery that reflects new beginnings, fresh energy, or whatever the new year means to you.



February : Moody

Art isn't always bright colours and pretty scenes — sometimes the most powerful pieces come from exploring shadows, raw emotion, and rough textures. This month, we challenge you to create something moody, intense, or edgy. Experiment with dark tones, bold contrasts, or unconventional materials — and let your art tell a story beyond the surface.



Michael Wade,
“A Light in the Dark”, Charcoal on paper

JANUARY SPEAKER

William Onker

A humble self-taught artist, William Onker, is our January speaker. William draws inspiration from local townships and street scenes. William sketched from a young age. 10 years ago he decided to become a fulltime artist. William will share his art journey with us as well as some insights into selling one's art online.

[Facebook](#) WhatsApp 0788218024



NOVEMBER MEETING REPORT

FOUNDERS' TROPHY 2025

The food and drinks tables were full of delicious treats for our November meeting. Andy Duffell-Canham kept us entertained while we excitedly waited for the winners of our Founders' Trophy to be announced. Sonja Rivett-Carnac was our worthy winner with her atmospheric forest scene. Lynda Murison with her beautiful abstract was second and Lynne Menge with her seascape was our third place winner. Thank you for sharing your art with us. We have many talented artists in our society. It was difficult to decide a winner. Peter Nel, from The Deckle Edge, visited us on the evening and he announced the final winner of the R1000 voucher, Janine Downing.



First Place Winner: Sonja Rivett-Carnac



Second Place Winner: Linda Murison



Third Place Winner: Lynne Menge

NOVEMBER MEETING GALLERY



SPRING EXHIBITION

Kirstenbosch Gardens

7

Our Spring Exhibition was a great success. The hanging took place on 5 November, and as always there was such a buzz of excitement in the air. We had 66 members exhibit which included a mix of new members showing their work, along with some familiar faces who haven't exhibited in a while. This year's display included more large paintings and sculptures than usual, adding plenty of visual drama and depth to the exhibit. We sold 221 artworks and made R202605 in sales. Congratulations and thank you to all the artists and helpers who were part of making this exhibition such a great success. We received a lot of compliments about the quality of the artwork on display and the friendly sitters who created such a welcoming atmosphere. We already have our next dates booked for Kirstenbosch which are 23 January to 3 February, so make sure to check your emails at the beginning of next year for booking information!



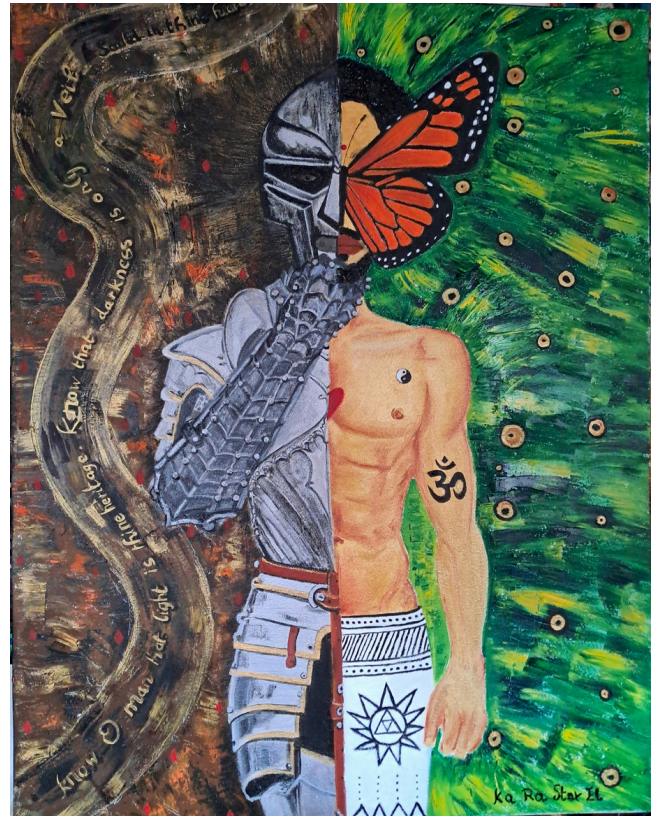
NEW MEMBER

SHOWCASE : CHRISTELLE BEAUVICHE

I'm a French artist based in Muizenberg, Cape Town. My work explores transformation — the beauty of change symbolized by the butterfly.

Inspired by nature, people, music, and light, I create with acrylics, mixed media, and gold leaf, often using my own photographs as a starting point. My paintings reflect the cycle of life, the joy of being, and the transcendence that connects us to something greater.

Through colour, texture, and form, I invite you to experience the sense of lightness, transformation, and inner awakening that inspires my art.



"The Mask and the Butterfly - Duality Within Painting"
Oil on Canvas

MONTHLY CHALLENGES 2026

January: Print
February: Moody
March: Nostalgia
April: My Style
May: Mixed media
June: Artivism
July: Still life scene from home
August: Challenge
September: Animal using different tools
October: Favourite Inktober prompt
November: Founders' Trophy



 **loot.co.za**

Loot.co.za invites you to shop
our wide range of Arts and Crafts
supplies at great prices

**GET 5% OFF ARTS
AND CRAFTS
PRODUCTS WHEN
YOU USE THE
COUPON CODE:**

LOOTDECCASART

Minimum spend R250

Expires 15 January 2026

One voucher per customer and order



www.facebook.com/Lootcoza



www.x.com/lootcoza



www.instagram.com/lootcoza



www.tiktok.com/@lootcoza



CLICK www.loot.co.za



DIAL 087 820 LOOT (5668)



EMAIL info@loot.co.za

FIND EVERYTHING YOU NEED ONLINE AT www.loot.co.za



**FREE COURIER OR CLICK & COLLECT DELIVERY
ON ALL ORDERS OVER R450 ANYWHERE IN SOUTH AFRICA***

*PRICES ARE SUBJECT TO CHANGE & VALID WHILE STOCKS LAST (BAGE/TAXES APPLY)



PLEASE CONSULT THE ATTACHED LISTS OF CAS ART BOOKS AND MAGAZINES. MAKE YOUR SELECTION AND CONTACT OUR LIBRARIAN, MIEKE (0760237568 OR EMAIL HER AT MIEKEFINEART@GMAIL.COM), TO COLLECT YOUR PRE-RESERVED ITEMS AT OUR MONTHLY MEETING. ALTERNATIVELY YOU CAN ARRANGE TO COLLECT THEM IN WYNBERG.

Social Media Corner

Click the icon and come and visit our Social Media pages



SOME REMINDERS

ABOUT USING OUR LIBRARY

1. BOOKS ARE LOANED FOR A MONTH, FROM ONE MEETING TO THE NEXT. PLEASE BE CONSIDERATE ON THIS ISSUE.
2. YOU MAY RENEW YOUR BOOK ONCE, THEREAFTER A FINE OF R10 IS PAYABLE FOR EVERY MONTH NOT RETURNED. PLEASE CONTACT MIEKE TO RENEW.
3. IF SOMEONE HAS REQUESTED THE BOOK YOU HAVE OUT THEN IT CANNOT BE RENEWED.
4. ONLY TWO ITEMS MAY BE TAKEN OUT AT A TIME.
5. GUESTS OF MEMBERS MAY NOT BORROW ANYTHING FROM OUR LIBRARY.
6. IF A BOOK IS LOST OR DAMAGED THEN IT NEEDS TO BE REPLACED WITH AN IDENTICAL COPY OR PAID FOR.

DISCOUNTS FOR CAS MEMBERS

Your 2024/25 membership letter/card will allow you to claim your discount from the following art shops:

- 10% at Truly Fantastic Canvases (Capricorn Business Park, Muizenberg)
- 10% at The Write Shoppe (Steenberg, SunValley, LongBeach) selected art materials
- 10% at The Italian Artshop (Riverside Mall, Rondebosch)
- 10% at Waltons (Constantia Village, Constantia)
- 10% at Brush & Canvas (Belvedere Square, Claremont)
- 10% at The Deckle Edge (13 Brickfield Rd, Salt River)
- 10 % at Artland (F7 Prime Park, Mocke Road, Diep River)
- 10% at Oxford Stationers (Gardens Centre & Table Bay Mall)
- 15% at ETH Canvas
- 5% at Loot.co.za (Arts and Crafts only, using the monthly CAS Voucher code)

PALETTE ADVERTISING RATES

Full Page R300 (A4 portrait)
Half Page R200 (A5 landscape)
Insert R150

(All options include an email to members and advert on the CAS social pages)

NOTICE BOARD

CLICK ON THE LINKS BELOW TO ACCESS THESE RESOURCES:

- [CAS Recommended Framers](#)
- [Art Classes and Workshops](#)
- [Instagram Accounts to follow](#)

